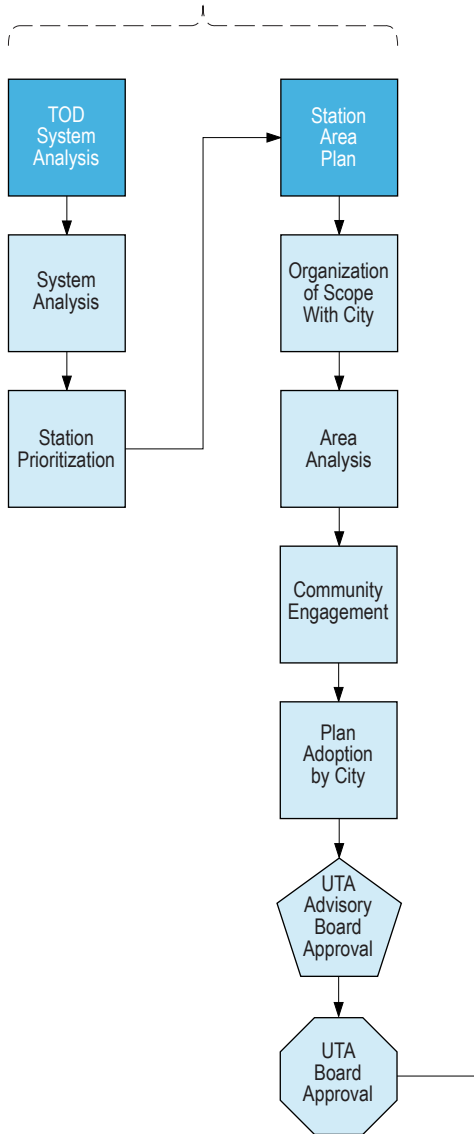
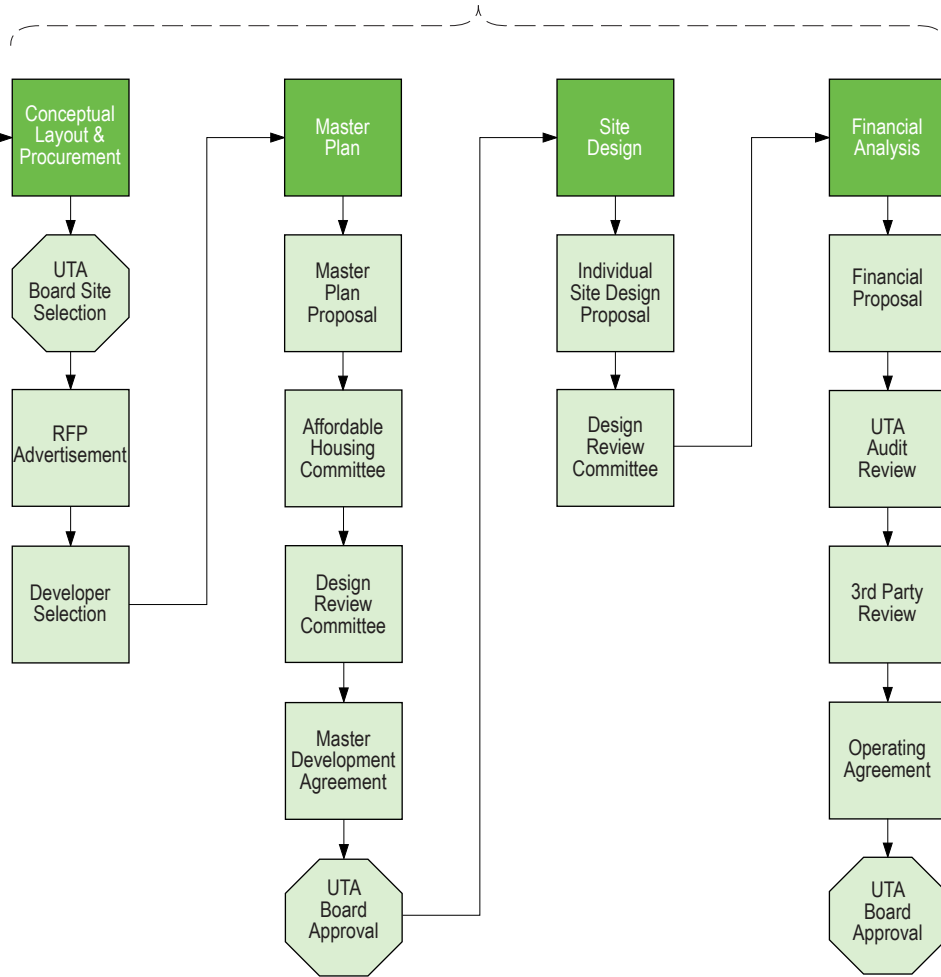


Exhibit A

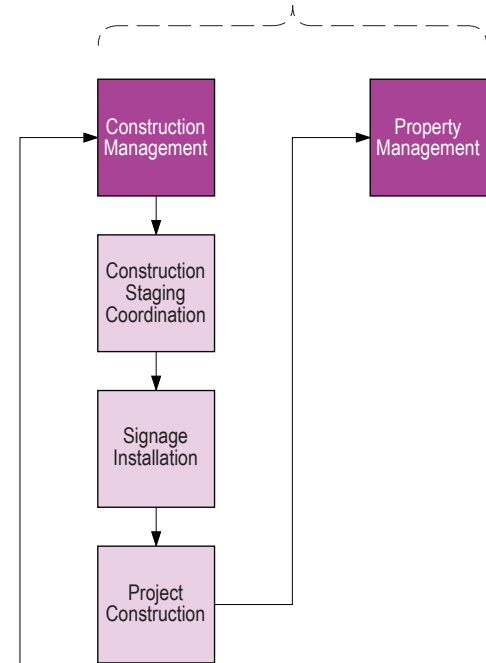
Planning



Implementation



Management



Date	Item	Detail	Board of Trustees	Local Advisory Board	Staff/ Selection Committee
9-Jan	Discussion Item - TOD Policy & Process	Discuss changes to TOD Policy since board adoption - changes are necessitated due to new board organization Review process for preparing sites for development, selecting sites and development partners, seeking approvals	X		
16-Jan	Approval of TOD Policy	Review and consider approval of TOD Policy - Policy changes required to be approved by Local Advisory Board		X	
23-Jan	Approval of TOD Policy	Review and consider approval of TOD Policy	X		
30-Jan	Discussion Item - System Analysis Tool	Discuss purpose of TOD System Analysis tool, criteria, and proposed criteria weighting	X		
13-Mar	Approval of Station Area Plans	Statute requires all TOD plans to be approved by the Local Advisory Board Local Advisory Board will consider all completed Station Area Plans for approval.		X	
20-Mar	Approval of Station Area Plans Results of System Analysis Tool	TOD Policy requires the Board of Trustees to approve all Station Area Plans Approved Station Area Plans make sites eligible for selection, based on information from the TOD System Analysis Tool Discuss results of prioritization tool	X		
27-Mar	Site Selection & RFQP Authorization	Statute requires that sites be selected by the Board of Trustees Select TOD sites Authorize staff to issue Request for Qualifications & Proposals	X		
29-Mar	Issue RFQPs	Criteria for development partner selection will be based on findings of applicable Station Area Plans			X
30-Apr	Proposals Due & Reviewed by Selection Committee	Selection Committee is made up of UTA and MPO staff, representatives from applicable community, and other stakeholders as needed			X
7-May	Developer Selection	Selection Committee meets to review proposals and select development partner			X
31-May	Execution of Exclusive Negotiation Agreement	ENA's govern the due diligence, negotiation, and entitlement period in preparation for an approved Master Plan and Master Development Agreement			X

2019 UTA ADMINISTRATION SALARY STRUCTURE

Date Printed: 01/09/2019

<u>Pay Grade</u>	<u>MIN</u>	<u>MID</u>	<u>MAX</u>	<u>Job Code</u>	<u>Job Title</u>
EX	\$130,501.28	\$181,116.00	\$231,730.72		
	\$62.74	\$87.08	\$111.41		
				EX1011	Chief Financial Officer
				EX1013	Chief Operating Officer
				EX1037	Chief People Officer
				EX1038	Chief Safety&Sec and Tech Ofc
				EX1039	Chief Service Development Ofc
				EX1040	Chief Comms &Marketing Officer
O	\$117,752.96	\$160,282.72	\$202,814.56		
	\$56.61	\$77.06	\$97.51		
				MG2074	Sr Program Mgr, EngProject Dev
				MG2114	Director of Asset Management
				MG2120	Director of Capital Projects
				MG2129	IT Director
				MG4015	Regional GM Mt. Ogden BU
				MG4016	Regional GM Timpanogos BU
				MG4017	Special Services GM
				MG4022	Regional GM Salt Lake BU
				MG4025	Commuter Rail General Manager
				MG4026	Light Rail General Manager
				MG4915	Acting Regional GM Mt Ogden BU
				PR4005	Senior Counsel- Contracts
N	\$99,996.00	\$133,548.48	\$167,100.96		
	\$48.08	\$64.21	\$80.34		
				MG2033	Chf of Police - Pub Safety Mgr
				MG2068	Comptroller
				MG2076	SrMgr Budget&FinancialAnalysis
				MG2089	Sr Supply Chain Manager
				MG2108	Government Relations Director
				MG2110	Director of Planning
				MG2113	Communications Director
				MG2116	IT Network Support Mgr
				MG2123	Sr Mgr Ops Analysis &Solutions
				MG2126	Apps Support & Dvlpment Sr Mgr
				MG2130	Sr Mgr Culture and Talent Dev
				MG2133	Dir HR Svcs & Labor Relations
				MG2134	Director Total Rewards
				MG2140	Dir Innovat Mobility Solutions
				MG2143	Sr Counsel- Managing Attorney
				MG2148	Prog Mgr-Env,Grants,Proj Contr
				MG2933	Acting Police Chief
				MG2940	Acting Dir Innov Mobility Sol
				PR3083	Sr Dev Program Engineer
				PR4003	Senior Counsel
				TL3018	Sr Database Administrator
				TL3020	JDE ERP Sr Developer
				TL3023	Sr App Dev Engr-Architect
M	\$85,488.00	\$112,168.16	\$138,850.40		

Note: **INTERN** wage rate is 75% of corresponding pay lane

2019 UTA ADMINISTRATION SALARY STRUCTURE

Date Printed: 01/09/2019

<u>Pay Grade</u>	<u>MIN</u>	<u>MID</u>	<u>MAX</u>	<u>Job Code</u>	<u>Job Title</u>
	\$41.10	\$53.93	\$66.76		
				MG1059	Mgr Qual and Const Oversight
				MG1060	Program Mgr Innov Mobility Sol
				MG2009	Facilities Maintenance Manager
				MG2010	Manager of Rail Operations
				MG2013	Mgr Light Rail Vehicle Maint
				MG2014	Mgr of Public Rel & Marketing
				MG2035	Mgr of Civil Rights Compliance
				MG2038	Mgr Rail Technical Svcs & QA
				MG2091	Coordinated Mobility Manager
				MG2093	Mgr Rail Plan/Perf, Proj Deliv
				MG2094	Mgr of CR Vehicle Maintenance
				MG2100	Mgr of IT Quality Assurance
				MG2109	Mgr Light Rail Operations
				MG2118	Sr Mgr- Real Estate and TOD
				MG2125	Comms & Deployment Mgr
				MG2127	Fare and BI Apps Mgr
				MG2132	Sr Mgr Workforce Pl&Talent Acq
				MG2135	Mgr Rail Infrastructure Assets
				MG2136	Mgr Rail Systems Assets
				MG2142	Project Manager III
				MG2145	Fares Director
				MG2146	Mgr Commuter Rail Operations
				MG2147	Manager IT Project Mgmt Office
				MG2149	Mgr Business Development-Sales
				MG2936	Acting Mgr Rail Systems Assets
				PR3057	Assistant Corporate Counsel
				PR3123	Sr Civil Engineer
				PR3149	Civil Engineer III
				SU3020	Captain
				SU3025	Radio and Comms Engr Supv
				SU3026	Application Support Supv
				SU3027	Application Development Supv
				TL2028	Systems Support Analyst III
				TL2046	SharePoint Admin-Developer
				TL3012	Programmer Analyst III
				TL3013	Sr Information Security Admin
				TL3021	B.I. Architect-Programmer
L	\$73,582.08	\$94,970.72	\$116,359.36		
	\$35.38	\$45.66	\$55.94		
				MG1008	Manager of Customer Service
				MG1031	Assistant Comptroller
				MG1056	Benefits & Compliance Mgr
				MG1057	Mgr Customer Experience
				MG1058	Mgr Ops-Maint Sys Arch & Sol
				MG1915	Acting Mgr LongRange StratPlan
				MG2016	Mgr Property Administration
				MG2030	Claims & Insurance Manager

Note: **INTERN** wage rate is 75% of corresponding pay lane

2019 UTA ADMINISTRATION SALARY STRUCTURE

Date Printed: 01/09/2019

<u>Pay Grade</u>	<u>MIN</u>	<u>MID</u>	<u>MAX</u>	<u>Job Code</u>	<u>Job Title</u>
				MG2045	Manager of Service Delivery
				MG2054	Manager of Right of Way Assets
				MG2071	Mgr Transit Communications Ctr
				MG2075	Mgr, Project Dev/Systems Plan
				MG2083	Mgr Service Planning
				MG2084	Manager of Operations Planning
				MG2090	Mgr Procurement Grants/Contrac
				MG2098	Manager of Safety
				MG2105	Mgr Vehicle Perf & Maintenance
				MG2107	Records Manager
				MG2111	Director of Strat Board Opns
				MG2115	Mgr Ticket Vend Machine Assets
				MG2128	Mgr State of Good Repair
				MG2139	Mgr Veh Overhaul & Bus Support
				MG2141	Project Manager II
				PR2111	Sr TAcq Full Cycle Recruiter
				PR3013	Facilities Engineer
				PR3035	Sr Media Relations Specialist
				PR3078	EFC Data Analyst
				PR3104	Sr Business Process Developer
				PR3113	Sr Compensation Analyst
				PR3116	Data WH & Bus Intel Sys Analyst
				PR3126	Sr Internal Auditor
				PR3128	Sr Continuous Improve Consultant
				PR3140	Sr Technical Business Analyst
				PR3147	Sr Strategic Sourcing Spec
				SU2052	ERP Tech Sys Admin-SupplyChain
				SU3006	HRIS/Technology System Admin
				SU3013	Network Comm/Infra Supervisor
				SU3019	Fleet Engineering Admin
				SU3024	Business & Quality Analyst Supv
				SU3028	Supv Opns Business Systems
				SU3030	Talent Acquisition Supervisor
				SU3031	Leadership Development Admin
				SU3034	Bus Communications Supv
				TL2012	Programmer Analyst II
				TL2041	Radio Systems Engineer Trainee
				TL2042	ERP Tech Sys Admin-Accounting
				TL2044	Maintenance Systems ERP Admin
				TL2047	ERP Tech Sys Admin-Developer
				TL3005	Systems Engineer
				TL3015	Sr Tech Deploy Project Lead
				TL3016	Network Administrator III
K	\$63,772.80	\$81,057.60	\$98,342.40		
	\$30.66	\$38.97	\$47.28		
				MG1014	Asst Mgr of Service Delivery
				MG1035	Project Manager I
				MG1038	Special Svc Program Mgr

Note: **INTERN** wage rate is 75% of corresponding pay lane

2019 UTA ADMINISTRATION SALARY STRUCTURE

Date Printed: 01/09/2019

<u>Pay Grade</u>	<u>MIN</u>	<u>MID</u>	<u>MAX</u>	<u>Job Code</u>	<u>Job Title</u>
				MG1041	Asst Mgr of Rail Operations
				MG1044	Warehouse & Inventory Opns Mgr
				MG1045	Manager of Security
				MG1048	Asst Mgr Light Rail Veh Maint
				MG1050	Asst Mgr of Svc Delivery (SS)
				MG1052	Asst Mgr CR Vehicle Maint
				MG1053	Asst Mgr Rail Infra Assets
				MG1054	Asst Mgr Rail System Assets-CR
				MG1055	Asst Mgr Rail System Assets-LR
				MG1955	Acting AM Rail Sys Assets-LR
				PR2029	Communications Specialist
				PR2036	Rail Service/Ops Sr Planner
				PR2069	Emergency Mgmt Program Mgr
				PR2070	Video Security Admin
				PR2079	Active Transportation Planner
				PR2083	Property Administrator II
				PR2107	Internal Communications Spec
				PR2108	Sr Property Administrator
				PR2110	Civil Engineer II
				PR3001	Environmental Compliance Admin
				PR3012	Strategic Planner III
				PR3018	Claims Administrator
				PR3024	Civil Rts Compliance Ofc (ADA)
				PR3026	Grants Development Admin
				PR3028	Workers Compensation Admin
				PR3036	Public Relations Specialist
				PR3049	Sr Service Planner
				PR3050	Sr Operations Planner
				PR3053	Project Control Specialist
				PR3089	Transit Asset Administrator
				PR3090	Sr Social Media Specialist
				PR3091	NEPA Project Administrator
				PR3103	Sr Planning Researcher
				PR3111	Vehicle Procure/Comm Admin-Bus
				PR3117	EnvSteward&Sustain Planner III
				PR3118	Researcher- Innov Mobility Sol
				PR3122	Strategic Sourcing Specialist
				PR3127	Opns Systems Admin-Specialist
				PR3130	Sr Org Development Consultant
				PR3131	Coord Mobility Grant Admin
				PR3134	Civil Rts Comp Ofc (TVI-DBE)
				PR3136	Sr BusinessProc Analytics Spec
				PR3137	Sr Financial Analyst
				PR3138	Sr Government Relations Spec
				PR3139	GIS-Asset Administrator
				PR3141	Proj Development Planner III
				PR3142	HR Business Partner
				PR3143	RR Regulatory Compliance Spec

2019 UTA ADMINISTRATION SALARY STRUCTURE

Date Printed: 01/09/2019

<u>Pay Grade</u>	<u>MIN</u>	<u>MID</u>	<u>MAX</u>	<u>Job Code</u>	<u>Job Title</u>
				PR3146	Procurement & Contracts Spec
				PR3148	Sr Procurement & Contracts Spec
				PR3153	Financial Svcs Administrator
				SU2018	Facilities Maint Supv
				SU2023	Technical Services Supervisor
				SU2030	Lieutenant
				SU2037	Transit Communications Supv
				SU2038	Technical Support Supervisor
				SU2056	Senior Accountant
				SU2060	Service Planning Supervisor
				SU2062	Coord Mobility Grant Admin
				SU3001	Rail Maintenance Supervisor
				SU3002	Maintenance Of Way Supervisor
				SU3004	Maint Training Administrator
				SU3005	Bus Opns Training Admin/Supv
				SU3012	Vanpool Fleet Maint Supervisor
				SU3021	Light Rail-MOW Training Admin
				SU3033	Talent Dev Program Advisor
				TL2008	Network Administrator II
				TL2014	Digital Media Specialist
				TL2019	Electronic Comms Team Leader
				TL2025	Tech Deploy Project Lead
				TL2037	Radio Comms Engr Tech II
				TL2038	Radio Comms Engr Tech III
				TL2048	Information Security Analyst
				TL3006	Fleet Engineer
				TL3009	Sr Telecommunications Spec
J	\$55,660.80	\$69,740.32	\$83,819.84		
	\$26.76	\$33.53	\$40.30		
				MG1042	Board Support Mgr
				PR2060	Rail Opns Training Leader
				PR2077	Civil Engineer
				PR2080	Coordinated Mobility Specialis
				PR2082	Property Administrator I
				PR2084	SS Delivery Systems Admin
				PR2085	TOD Project Specialist I
				PR2086	TOD Project Specialist II
				PR2088	Continuous Improve Specialist
				PR2113	Rail Quality Assurance Admin
				PR2115	Planning Researcher II
				PR2117	CI Specialist- Supply Chain
				PR2118	Fleet Vehicle Maint Admin- Bus
				PR3014	Contract Buyer
				PR3022	Internet Marketing Specialist
				PR3032	Maint Training Specialist
				PR3043	Rail Service Project Admin
				PR3062	Business and Quality Analyst
				PR3070	Safety Administrator-Const

2019 UTA ADMINISTRATION SALARY STRUCTURE

Date Printed: 01/09/2019

<u>Pay Grade</u>	<u>MIN</u>	<u>MID</u>	<u>MAX</u>	<u>Job Code</u>	<u>Job Title</u>
				PR3088	Rail Maint Training Specialist
				PR3108	Safety Admin - Transit System
				PR3114	Special Svcs Sr Planner
				PR3120	Corp Instructional Designer
				PR3121	Sr Buyer
				PR3132	LR-MOW Instructional Designer
				PR3145	Strategic Culture Partner
				PR3151	People Office Strat Analyst
				SP3020	Commuter Rail Train Dispatcher
				SU2009	Operations Supervisor
				SU2010	Downtown Operations Supervisor
				SU2011	Light Rail Operations Supv
				SU2014	LRV Maint Supervisor
				SU2015	Bus Vehicle Maint Supv
				SU2019	Accounting Supervisor
				SU2031	Commuter Rail Veh/Maint Supv
				SU2032	Farebox Service Supervisor
				SU2035	Sergeant
				SU2041	Rail Opns Training Leader
				SU2042	Commuter Rail OpsPersonnelSupv
				SU2044	LRV Maint Supv-Team Mentor
				SU2045	LRV Maint Supv-BusinessAnalyst
				SU2046	LRV Maint Supv-BusinessSolSpec
				SU2047	LRV Maint Supv-QAQC Specialist
				SU2048	LRV Maint Supv-TeamCoordinator
				SU2049	LRV Maint Supv-Training Admin
				SU2050	LRV Maint Supv-Training Spec
				SU2051	LRV Maint Supv-BodyFabrication
				SU2053	LRV Maint Supv-PartsToolsEquip
				SU2054	Light Rail Controller Supv
				SU2055	LR Opns- Training Supv
				SU2058	Maintenance Analyst-Supervisor
				SU2059	CR Veh Maint Training Leader
				TL1009	Systems Support Analyst I
				TL2006	Fleet Engineering Technician
				TL2017	Programmer Analyst I
				TL2022	Network Administrator I
				TL2027	Systems Support Analyst II
				TL2033	Network Specialist
				TL2039	Fleet Maintenance Tech-Analyst
I	\$48,923.68	\$60,486.40	\$72,049.12		
	\$23.52	\$29.08	\$34.64		
				CL3001	Assistant to President/CEO
				CL3016	Maintenance Control Analyst
				CL3017	Operations Dispatch Lead
				CL3037	Asst to Executive Director
				CL3041	CR Operations Scheduler
				CL3042	Executive Asst to Board Chair

Note: **INTERN** wage rate is 75% of corresponding pay lane

2019 UTA ADMINISTRATION SALARY STRUCTURE

Date Printed: 01/09/2019

<u>Pay Grade</u>	<u>MIN</u>	<u>MID</u>	<u>MAX</u>	<u>Job Code</u>	<u>Job Title</u>
				CL3044	Executive Asst to Board
				PR1037	Talent Acquisition Specialist
				PR2008	Strategic Planner II
				PR2009	Buyer
				PR2010	Accountant
				PR2027	Service Planner
				PR2028	Operations Planner
				PR2051	Facilities Technician
				PR2062	Claims Adjuster
				PR2066	Legal Assistant
				PR2075	Maint Training Assistant Admin
				PR2078	Benefits Administrator
				PR2087	Commuter Rail Opns Trainer
				PR2093	Talent Acq FullCycle Recruiter
				PR2095	Graphic Art Specialist
				PR2096	EnvSteward&Sustain Planner II
				PR2097	Records Officer and Specialist
				PR2098	Bus Opns Training Asst Admin
				PR2100	Rail Service-Ops Planner
				PR2102	Special Svcs Planner
				PR2104	People Ofc Training Asst Admin
				PR2105	Proj Development Planner II
				PR2106	Customer Experience Planner
				PR2112	Bus Opns Training Lead
				PR2114	Planning Researcher I
				PR2116	IT Apps & Tech Support Analyst
				PR3063	Sr Marketing Representative
				PR3096	Sr Marketing Specialist
				SP3006	Estimator
				SP3008	Transit Police Officer III
				SP3009	Transit Police Officer IV
				SP3011	Flextrans Radio Control Coord
				SP3013	Sr Transit Comms Dispatcher
				SU1003	Customer Service Supervisor
				SU1007	ADA Evaluation Office Admin
				SU1008	Pass Facilities Road Crew Supv
				SU1016	Special Svc Scheduling Supv
				SU2040	Parts & Inventory Supervisor
				SU2043	Commuter Rail System Supv
				TL2015	Electronic Communications Tech
				TL2034	Revenue Equipment Maint Tech
				TL2035	Lead Technology Support Spec.
				TL2036	Radio Comms Engr Tech I
H	\$43,542.72	\$52,881.92	\$62,223.20		
	\$20.93	\$25.42	\$29.92		
				CL3003	Production Control Specialist
				CL3004	Warranty Claims Specialist
				CL3005	Materials/Inv Control Analyst

Note: **INTERN** wage rate is 75% of corresponding pay lane

2019 UTA ADMINISTRATION SALARY STRUCTURE

Date Printed: 01/09/2019

<u>Pay Grade</u>	<u>MIN</u>	<u>MID</u>	<u>MAX</u>	<u>Job Code</u>	<u>Job Title</u>
				CL3007	Vanpool Maintenance Specialist
				CL3018	Sr Office Specialist- Finance
				CL3019	Sr Office Spec- Mt Ogden BU
				CL3021	Sr Office Specialist- SLBU
				CL3022	Sr Office Specialist- SSvc BU
				CL3023	Sr Office Spec- Timpanogos BU
				CL3025	Sr Office Spec- Asst to PS Mgr
				CL3026	Sr Office Spec- Supply Chain
				CL3027	Sr Office Spec- Light Rail
				CL3028	Sr Office Spec- Maint of Way
				CL3029	Sr Office Spec- LR Veh Maint
				CL3030	Sr Office Spec- Ext Affairs
				CL3032	Sr Office Spec- Capital Proj
				CL3033	Sr Office Spec- Commuter Rail
				CL3034	People Office Administrator
				CL3035	Office Admin- Opns, Cap, Assets
				CL3036	Production Control Spec- LR
				CL3038	Sr Office Spec- Asset Mgt
				CL3039	Sr Office Spec- IT
				CL3040	External Affairs Office Admin
				CL3043	Office Admin- CFO and CSSTO
				CS1005	Cust Svc Technical Specialist
				PR1023	Assistant Service Planner
				PR1024	Assistant Operations Planner
				PR2001	Intern - Level III
				PR2030	Community Relations Spec
				PR2094	Bus Stop Administrator
				SP2020	Transit Comms Dispatcher
				SP3007	Transit Police Officer II
				SP3012	Warehouse Specialist
				SP3015	Payroll Administrator
				SP3019	Warehouse & Prod Control Lead
				SU1022	System Monitoring Administrator
				TL1005	Field Service Technician
				TL1010	Technology Support Technician
				TL2024	Communications QA Technician
				TL2032	Technology Support Specialist
				TL2040	Coord Mobility Tech Specialist
G	\$38,621.44	\$46,606.56	\$54,593.76		
	\$18.57	\$22.41	\$26.25		
				CL2064	Hearing Offcr-Fine Adjudicator
				CL2077	Employment Support Specialist
				CL2100	Coord Mobility Grants Spec
				CS2006	Lead Scheduling Specialist
				CS2010	Customer Svc Lead Specialist
				CS2013	Sr Customer Focus Specialist
				CS3001	Special Svc Cust Care Admin
				PR1001	Intern - Level II

Note: **INTERN** wage rate is 75% of corresponding pay lane

2019 UTA ADMINISTRATION SALARY STRUCTURE

Date Printed: 01/09/2019

<u>Pay Grade</u>	<u>MIN</u>	<u>MID</u>	<u>MAX</u>	<u>Job Code</u>	<u>Job Title</u>
				PR1008	Pass Sales Representative
				PR1015	Strategic Planner I
				PR1034	EnvSteward&Sustain Planner I
				PR1035	Proj Development Planner I
				SP2012	Transit Police Officer I
				SP2017	Property Specialist
				SP2021	Transit Comms Dispatch-Trainee
				SP2022	Transit Police Officer Trainee
				TL2045	Video Security Technician
F	\$34,690.24	\$41,408.64	\$48,124.96		
	\$16.68	\$19.91	\$23.14		
				CL2012	Facilities Office Specialist
				CL2018	Mobility Center Office Spec
				CL2026	Real Estate Office Specialist
				CL2070	Commuter Rail Office Spec
				CL2073	HR Office Specialist
				CL2078	Office Specialist
				CL2079	Rail Office Specialist
				CL2081	Paratransit Eligibility Spec
				CL2084	Public Safety Ofc Specialist
				CL2085	Maint Support Office Spec
				CL2086	Maintenance Office Specialist
				CL2087	Office Specialist-SSvc BU
				CL2089	Vanpool Maint Ofc Specialist
				CL2096	Rideshare Customer Accts Spec
				CL2098	Customer Svc Office Specialist
				CL2099	Benefits&Compliance Specialist
				CL2101	SS Cust Care&Sched Office Spec
				CL3011	Vanpool Support Specialist
				CS2003	Customer Relations Specialist
				CS2008	Paratransit Scheduling Splist
				CS2009	Customer Focus Specialist
				CS2011	Cust Comms & Social Media Spec
				PR1002	Intern - Level I
				PR1027	PublicSafety Records-Data Spec
				PR1031	Recovery Adjuster
E	\$31,387.20	\$37,084.32	\$42,781.44		
	\$15.09	\$17.83	\$20.57		
				CL1016	Talent Acquisition Assistant
				CL1018	Administrative Services Asst
				CL1019	HR Administrative Svcs Clerk
				CL2028	Receptionist- Accounting Clerk
				CL2083	Accts Payable-Receiveable Coord
				CR1901	Intern- Diesel Tech
				CS1008	Items Recovery Specialist
				CS1010	Sr Contact Center Agent
				SP1017	Fare Inspection Officer
				SP1020	System Monitor Data Specialist

2019 UTA ADMINISTRATION SALARY STRUCTURE

Date Printed: 01/09/2019

<u>Pay Grade</u>	<u>MIN</u>	<u>MID</u>	<u>MAX</u>	<u>Job Code</u>	<u>Job Title</u>
D	\$28,610.40	\$33,479.68	\$38,348.96	SP2016	Travel Trainer
	\$13.76	\$16.10	\$18.44		
				CS1009	Contact Center Agent
				SP1005	Farebox Revenue Processor
				SP1012	Security Guard
C	\$26,274.56	\$30,469.92	\$34,665.28	SP1013	Train Host
	\$12.63	\$14.65	\$16.67		
				CL1012	Office Clerk
				SP1016	System Monitor